

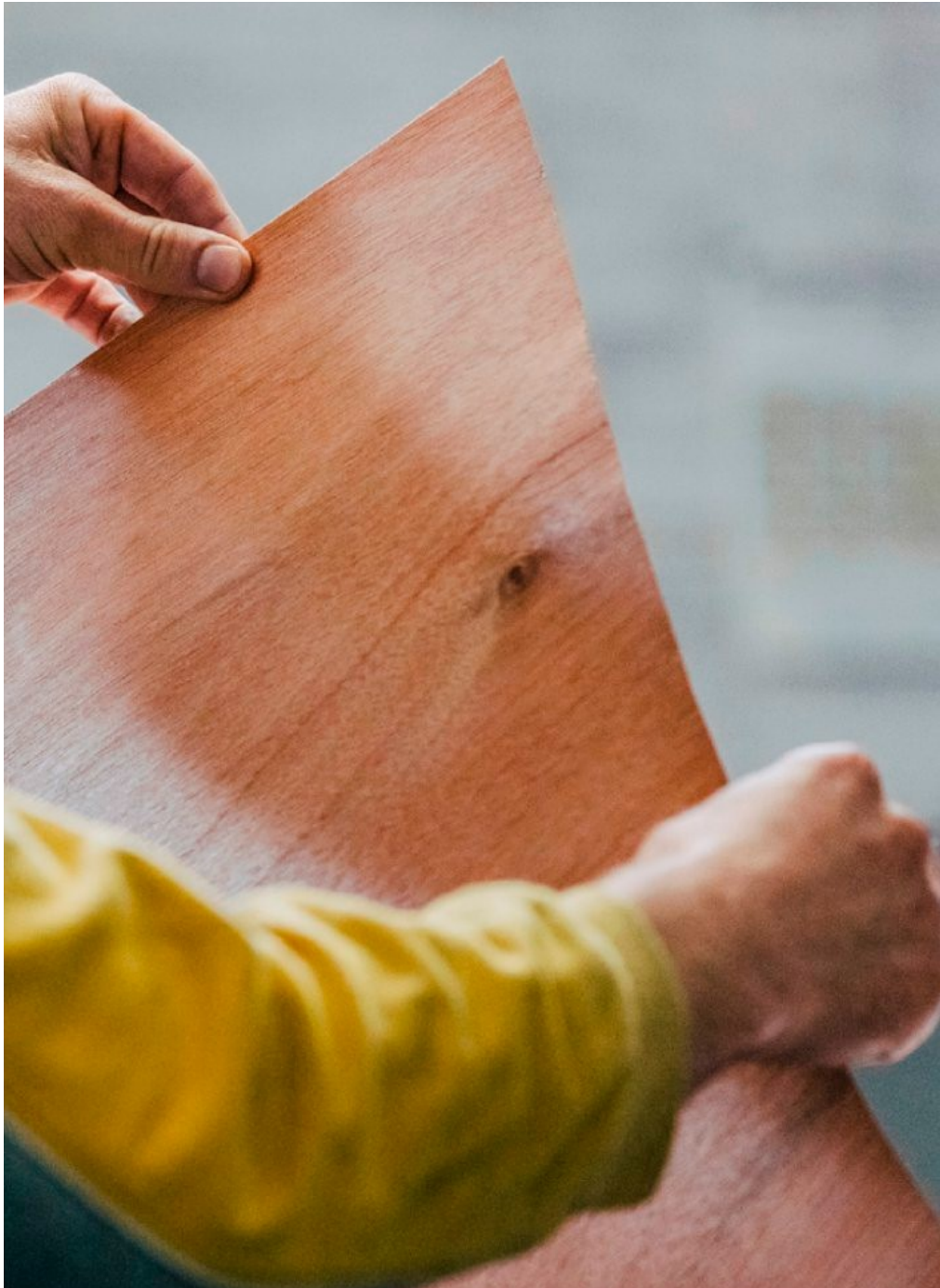


CLADDING

PARKLEX PRODEMA

CLADDING

PARKLEX PRODEMA



NATURCLAD-W is a laminated wood board for exteriors that requires zero maintenance.

The panels combine the virtues of wood, its natural warmth and beauty, with technical requirements to ensure optimum performance on exteriors over time.

NATURCLAD-W can be installed as a ventilated façade by way of louvres or overlapping slats, on false ceilings and on curved walls.



Zero maintenance wood

The surface composition of the NATURCLAD-W boards protects the wood from the most extreme weather conditions, removing any need for subsequent treatment.

Weather resistance

The EN 438-6:2005 European standard specifies that compact exterior cladding such as NATURCLAD-W must offer a certain resistance to weather according to the Resistance to Artificial Weathering Test. After 3000 hours of exposure, the material should have a rating variation of ≥ 4 in appearance, and a rating of ≥ 3 in contrast. NATURCLAD-W attains these values following exposure of up to 5 times greater than regulatory requirements.

Fire safety

The basic safety requirements reduce the risk of damage caused by accidental fire due to the characteristics of the project, construction, use and maintenance of the building to acceptable limits. NATURCLAD-W has achieved the best possible result for organic materials under regulations EN 13501 and US ASTM/NFPA for reaction to fire, which means that our products are approved all over the world.

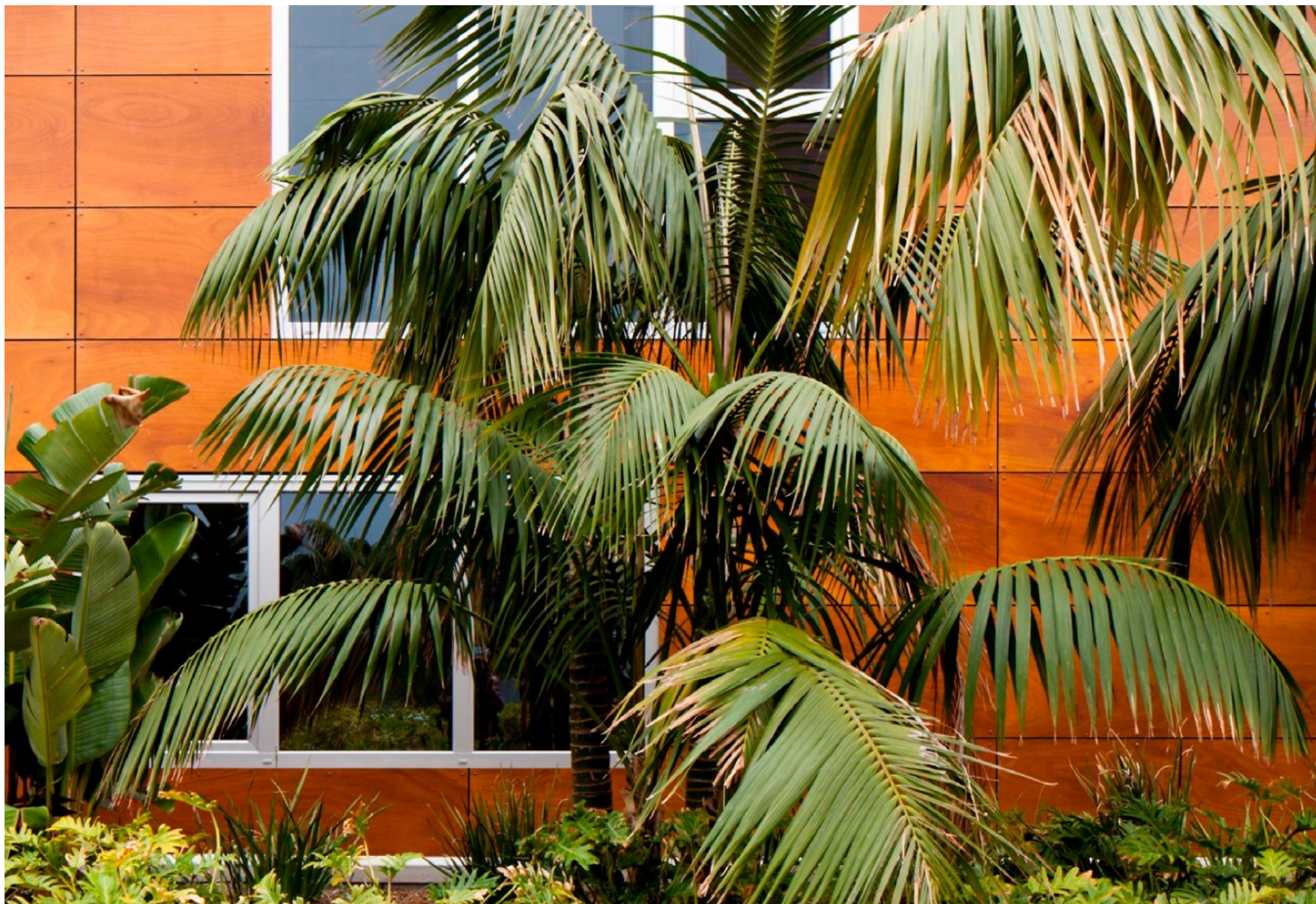
Installation versatility

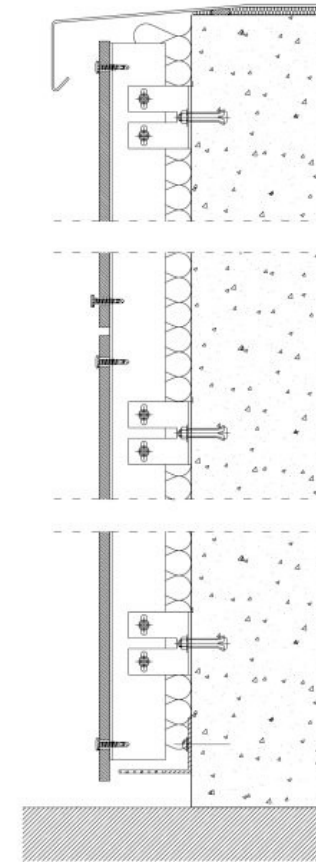
NATURCLAD-W can be installed as a ventilated façade by way of louvres or overlapping slats, on false ceilings and on curved walls. It has four different installation systems, which makes them easily adaptable to any kind of architectural requirement.





Product: NATURCLAD-W / Woods (from left to right): Pale, Onix, Rustik
Residences in Pacific City, by MVE Architects (Huntington Beach, CA, USA)





The ventilated façade is an efficient bioclimatic architecture solution that provides thermal insulation. In other words, it reduces heat dissipation in the cold months and heat absorption in the warmer months, resulting in a marked improvement in comfort inside the building.



Product: NATURCLAD-W / Wood: Onix
Manning Toronto, by Richard Wengle Architects Inc. (Toronto, ON, Canada)





Product: NATURCLAD-W / Wood: Rustik
Lazaridis Hall, Wilfrid Laurier University, by Diamond Schmitt Architects
with David Thompson Architect Ltd. (Waterloo, Ontario, Canada)



Product: NATURCLAD-W / Wood: Quartz
Turnagain Beach House Anchorage, by KPB Architects (Alaska, AK, USA)







Product: NATURCLAD-W / Wood: Rustik
Residence in Varese, by Franzetti Primi Architetti Associati (Varese, Italy)

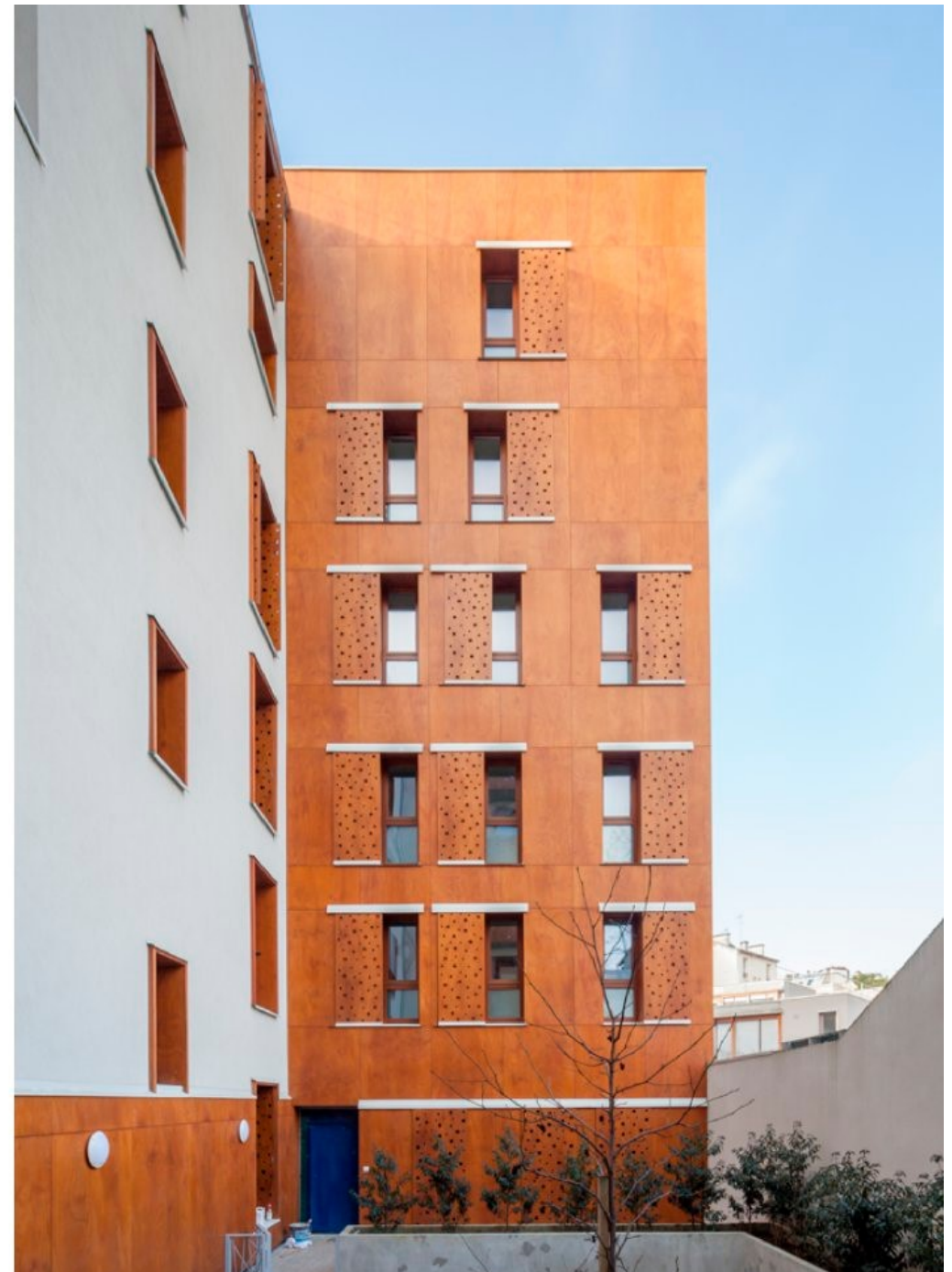




Product: NATURCLAD-W / Wood: Rustik
Residence in Varese, by Franzetti Primi Architetti Associati (Varese, Italy)



Product: NATURCLAD-W / Wood: Rustik
Residences in Rue des Orteaux, by Bob361 Architectes (Paris, France)

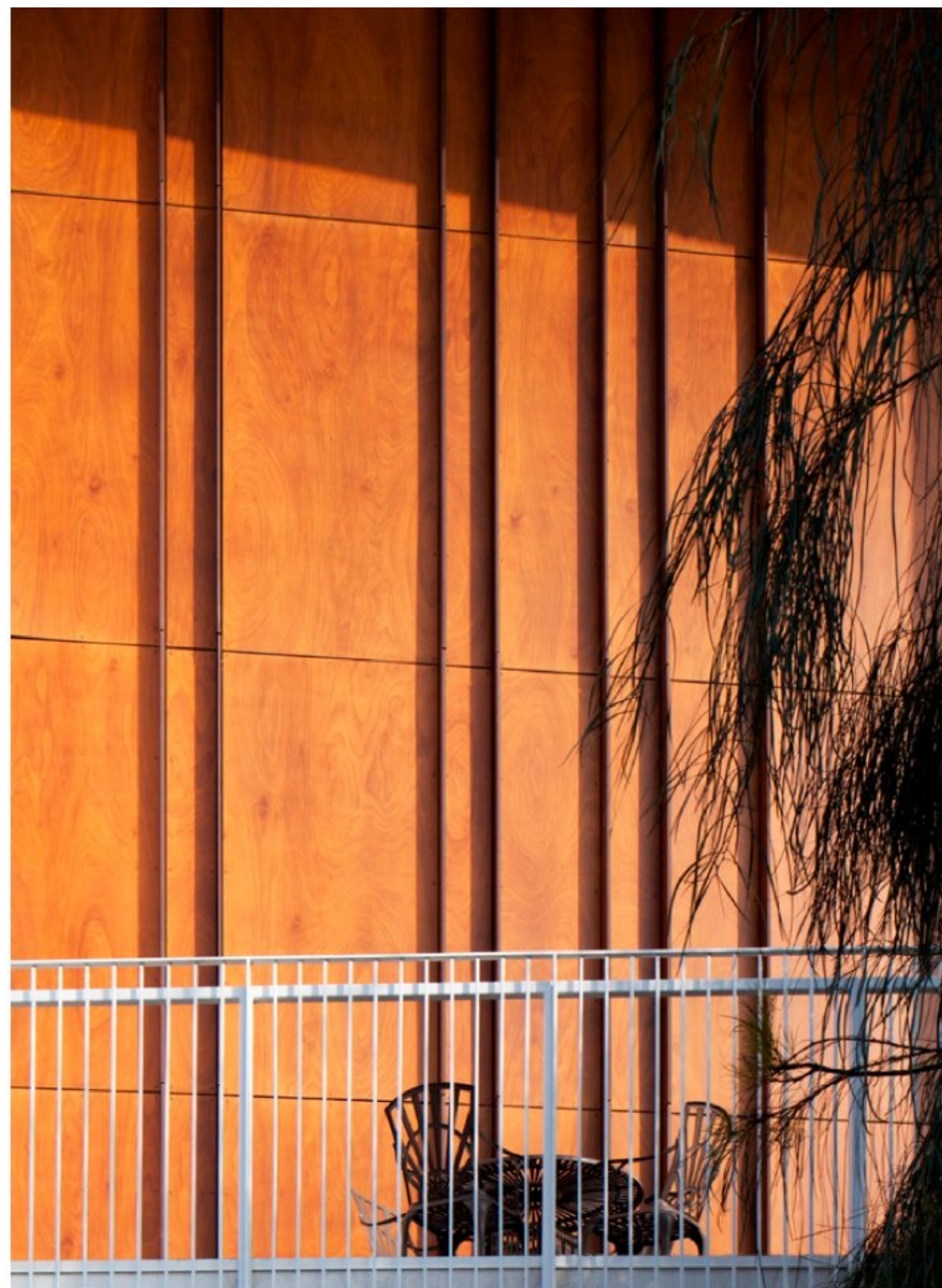




Product: NATURCLAD-W / Wood: Rustik
Rainbow Group Headquarters, by Studio Bianchi
(Loreto, Ancona, Italy)



Product: NATURCLAD-W / Woods: Rustik and Antra
Gateway Apartments, by Brooks+Scarpa Architects (Marina Del Rey, CA, USA)



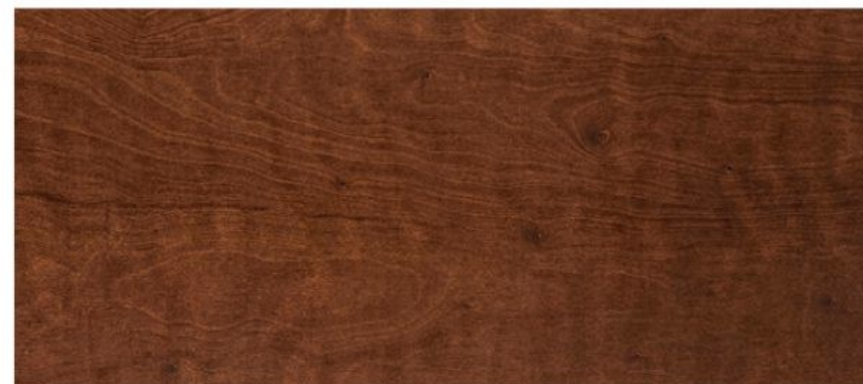
The NATURCLAD-W panels are available in nine shades that are obtained through ayous or okume veneer, which we get from forests that respect controlled felling.



AMBAR



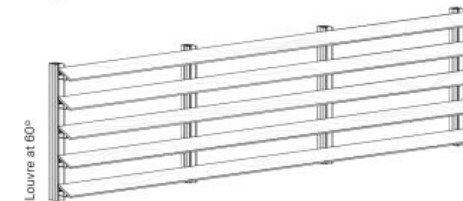
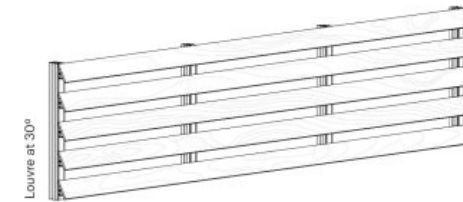
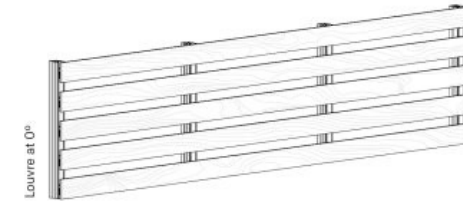
ANTRA



NUX

**RUSTIK****QUARTZ****PALE****RUBI****ONIX****SILVER**

Product: NATURCLAD-W / Wood: Rustik
Le Monastère des Augustines, by ABCP
Architecture (Quebec, Canada)

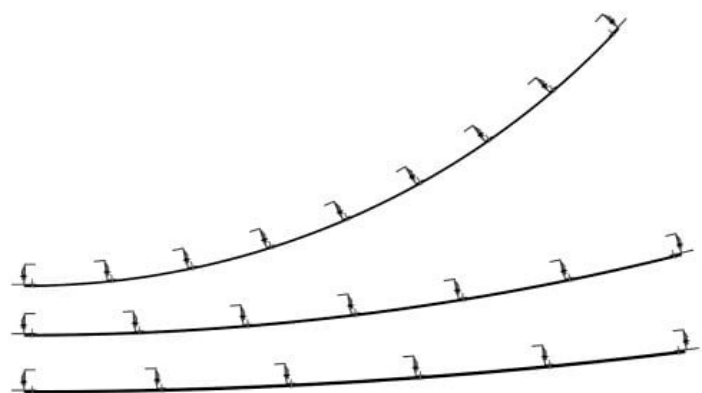


The NATURCLAD-W installation system in fixed louvre mode enables slats to be installed at 0°, 30° and 60°, both horizontally and vertically.

Valid for boards with a thickness of ≥ 10 mm. Parklex Prodema supplies the slats in three different widths: 86, 94 and 114 mm, with a maximum slat length of 2440 mm.



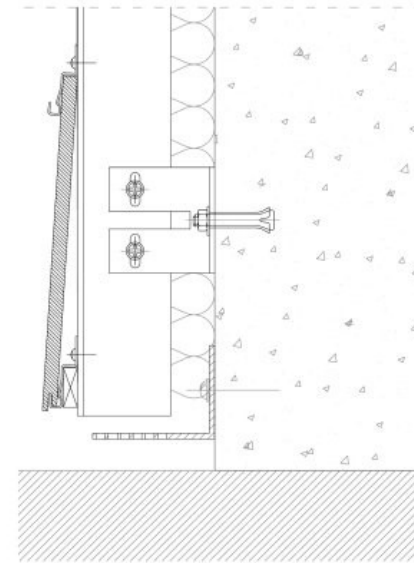
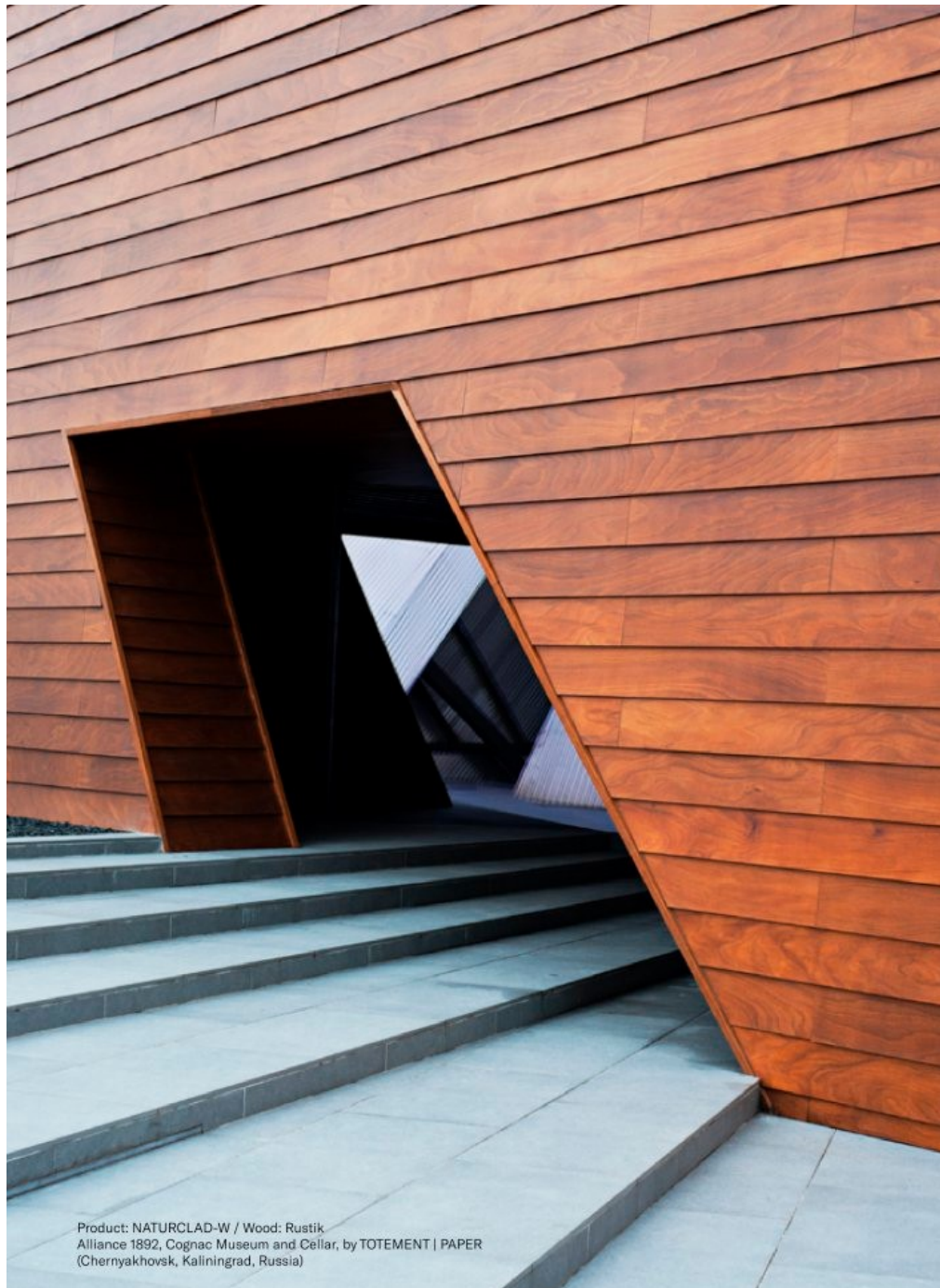
Product: NATURCLAD-W, NATURPANEL-W / Wood: Rustik
Le Monastère des Augustines, by ABCP Architecture
(Quebec, Canada)



The flexibility of the wood fibres allows NATURCLAD-W panels to adapt to certain radii of curvature, whether concave or convex.

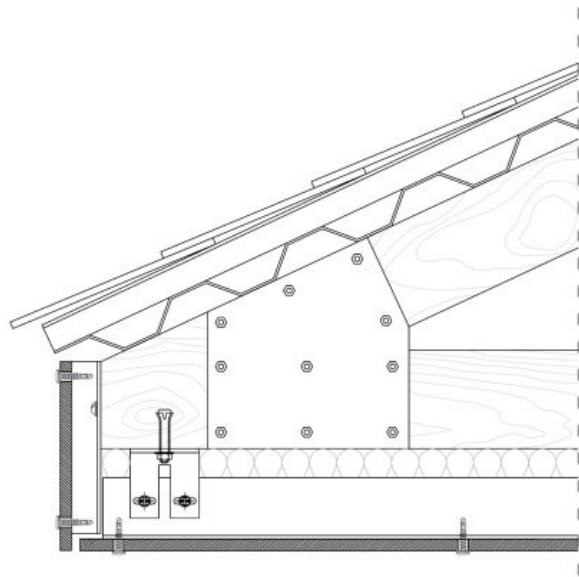
Parklex Prodema offers two different solutions for projects that require NATURCLAD-W to be installed as a curved façade cladding: either standard panels, if radii above 3 m are required; or pre-bent panels, if smaller radii are required.





The overlapping slats system enables a range of assembly procedures without needing to change the position of the parts' profiles.

Two different slat widths are supplied: 190 and 290 mm, both with a maximum length of 2440 mm. This concealed fixing system is only valid for thicknesses of 8 mm.



NATURCLAD-W boards can be installed on false ceilings by means of exposed or concealed fixing systems.

In the case of false ceilings, a minimum perimeter space of 20 mm must be left to enable ventilation through the chamber.



Product: NATURCLAD-W / Wood: Rustik
Sutton Offices in Magog (Quebec, Canada)



To install NATURCLAD-W, Parklex Prodema provides metal profiles, screws and rivets.

Tests	Standard	Property or attribute	Measurement unit	Result	
				Parklex Prodema NATURCLAD-W S (Standard) Rev: 10 (03.2017)	Parklex Prodema NATURCLAD-W F (Fireproof) Rev: 12 (02.2018)
1. Inspection requirements					
Colour, pattern and surface finish	EN 438-8 Part 5.2.2.3	Due to the fact that wood is a natural product, each veneer may be considered as unique. Colour and structure differences are considered as normal. Singularities such as knots or resin inclusions are not considered as defects, but as a part of the décor. There are differences in light fastness performances depending on the wood species and the source of the wood.			
2. Dimensional tolerances					
Thickness (t)	EN 438-2 Part 5	8.0 ≤ t < 12.0 12.0 ≤ t < 16.0 16.0 ≤ t < 20.0 20.0 ≤ t < 25.0	mm	± 0.50 ± 0.60 ± 0.70 ± 0.80	
Flatness (f)	EN 438-2 Part 9	8.0 ≤ t < 10.0 10.0 ≤ t	mm/m	5 3	
Length and width	EN 438-2 Part 6	–	mm	+10 / -0	
Edge straightness	EN 438-2 Part 7	–	mm/m	1.5	
Edge squareness	EN 438-2 Part 8	–	mm/m	1.5	
3. Physical properties					
Dimensional stability at elevated temperatures	EN 438-2 Part 17	Cumulative dimensional change (t ≥ 8 mm)	% max. longrain % max. crossgrain	0.3 0.6	
Resistance to impact with large diameter ball	EN 438-2 Part 21	Maximum height for which no visible surface cracking or imprint greater than 10 mm (t ≥ 8 mm)	mm	≥ 1,800	
Determination of graffiti resistance	ASTM D 6578:2000	Cleanability level	Permanent blue marker Red spray paint Black wax crayon Black water-based marker	3 4 2 1	
4. Weather resistance requirements					
Resistance to UV light	EN 438-2 Part 28 Rating according to EN 20105 – A02	Contrast Aspect	Grey scale rating Rating	≥ 3 ≥ 4	
Resistance to artificial weathering (including light fastness)	EN 438-2 Part 29 Rating according to EN 20105 – A02	Contrast Appearance	Grey scale rating Rating	≥ 3 ≥ 4	
5. CE Safety requirements					
Water vapour permeability	EN 438-7 Part 4.4	Wet cup method Dry cup method	µ	110 250	
Resistance to fixings	EN 438-7 Part 4.5	Screw holding value t ≥ 8 mm Screw holding value t ≥ 10 mm	N	≥ 3,000 ≥ 4,000	
Flexural strength	EN ISO 178	Longrain Crossgrain	MPa	≥ 80 ≥ 80	
Flexural modulus	EN ISO 178	Longrain Crossgrain	MPa	≥ 9,000 ≥ 9,000	
Thermal resistance/conductivity	EN 12664	Thermal conductivity (λ)	W/m K	0.266	0.22
Resistance to climatic shock	EN 438-2 Part 19	Appearance Flexural strength Flexural modulus	Rating Ds rating Dm rating	≥ 4 ≥ 0.80 ≥ 0.80	
Density	EN ISO 1183	Density	g/cm³	≥ 1.35	
Resistance to wet conditions	EN 438-2 Part 15	Moisture absorbed Appearance	% Rating	≤ 5 ≥ 4	≤ 8
6. CE Safety requirements - Reaction to fire					
Reaction to fire	EN 13501-1	Euroclass t ≥ 8 mm	Classification	C-s1,d0	B-s1,d0
Provided that the laminates are stored in the manner and conditions recommended by the manufacturer.					
Board measurements					
Length (grain direction) x width	2440 x 1220 mm	Thickness*	8, 10, 12, 14, 18, 20 and 22 mm		

EDITING & PRODUCTION
PARKLEX PRODEMA

ART DIRECTION
JAUME RAMÍREZ STUDIO

TEXT
CHESCA GUIM

CORPORATE PHOTOGRAPHY
MARÇAL VAQUER
YOSIGO

PROJECT PHOTOGRAPHY
11H45
GLEB LEONOV
JESUS MARTIN RUIZ
KEVIN G. SMITH

PRINTED IN BARCELONA
BY AGPOGRAF

